

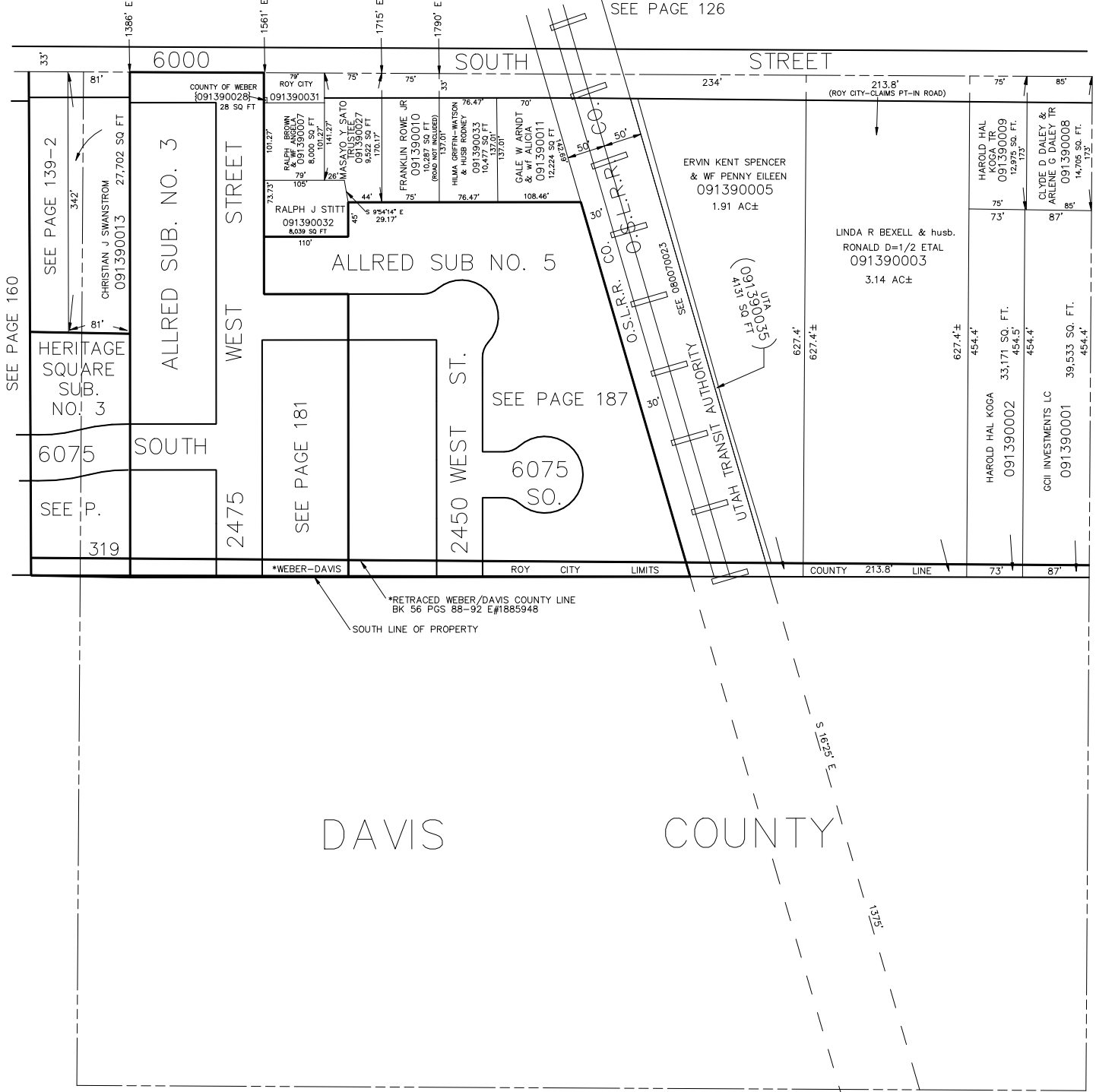
N.E. 1/4 OF THE S.W. 1/4
SECTION 23, T.5N., R.2W., S.L.B. & M.

IN ROY CITY

SCALE 1" = 100'

TAXING UNIT: 41

SEE PAGE 126



SEE PAGE 160

SEE PAGE 139-2
CHRISTIAN J SWANSTROM
091390013
27,702 SQ. FT.

HERITAGE SQUARE
SUB.
NO. 3

6075
SEE P.
319

ALLRED SUB. NO. 3

2475
SOUTH
WEST STREET

SEE PAGE 181

ALLRED SUB NO. 5

2450 WEST ST.

SEE PAGE 187

6075
SO.

ERVIN KENT SPENCER
& WF PENNY EILEEN
091390005
1.91 AC±

LINDA R BEXELL & husb.
RONALD D=1/2 ETAL
091390003
3.14 AC±

HAROLD HAL KOGA
091390002
33,171 SQ. FT.

GCI INVESTMENTS LC
091390001
39,533 SQ. FT.

HAROLD HAL KOGA TR
091390009
12,875 SQ. FT.

CLYDE D DALEY &
ARLENE G DALEY TR
091390008
14,705 SQ. FT.

*WEBER-DAVIS

ROY CITY LIMITS

COUNTY 213.8' LINE

*RETRACED WEBER/DAVIS COUNTY LINE
BK 56 PGS 88-92 E#1885948
SOUTH LINE OF PROPERTY

DAVIS

COUNTY

SEE PAGE 129